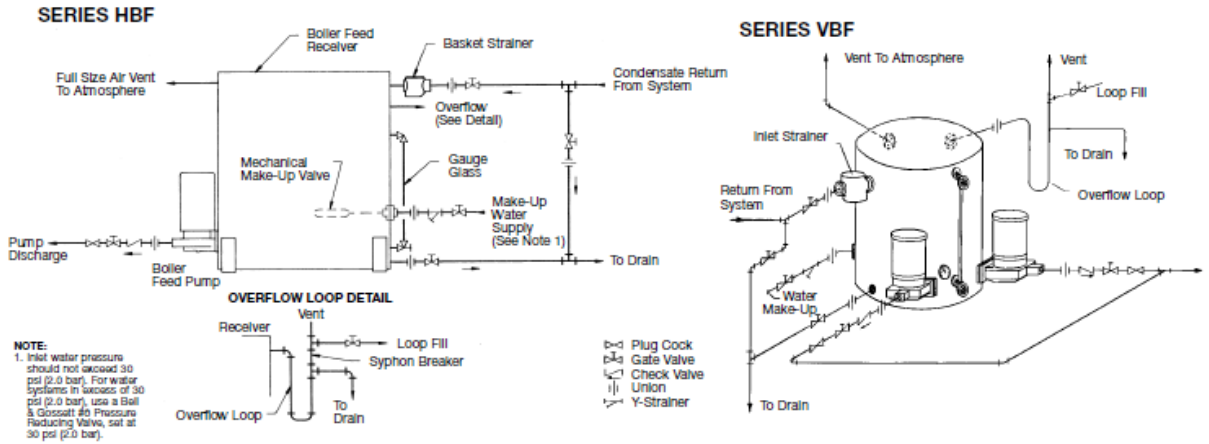
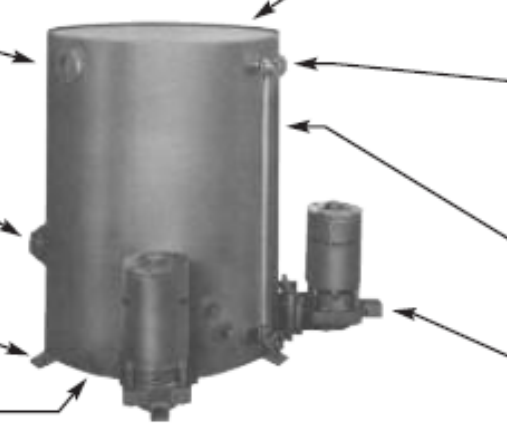


# INSTALLATION AND DESCRIPTION (TYPICAL PIPING DIAGRAM)



## Series VBF Standard Features to Compare

- Inlet**  
Low height, NPT Inlet for easy return line piping. Internally baffled to prevent corrosion.
- Make-Up Valve**  
Float operated, internal water make-up valve to add water at low level. Lever adjustment is standard.
- Mounting Feet**  
To mount unit in place and to keep unit off floor thus preventing corrosion formation.
- Drain Connection**  
NPT drain connection to allow removal if water during servicing.



- Vent & Overflow**  
Separate NPT connections to provide means of secondary venting.
- Vertical Receiver**  
To conserve floor space. Heavy gauge steel for corrosion prevention. Sized to hold approximately 10 minutes of boiler water needs. Has simplex, duplex or triplex pump openings.
- Water Level Gauge Glass**  
To indicate water level in receiver. Complete with protective brass rods and shut off valves.
- Centrifugal Pumps**  
Built to handle high temperature 200°F condensate. Pumps use carbon/ceramic mechanical seals designed for 250°F temperatures for maximum life.

**Optional Features**  
 Inlet Basket Strainers or "Y" Strainers.  
 Angle or Dial Thermometers.  
 Control Panels for wall mounting.

## Series VBF Selection Chart

Select According to Boiler HP      **Ordering Instructions:** Specify Single (1 Pump), Duplex (2 Pumps), Triplex (3 Pumps) and Unit Model No.

Model No. & (No. of Pumps)	SYSTEM RATING			UNIT RATING			DESCRIPTION						
	Boiler HP	GPM	Lbs./Hr.	Sq. Ft. E.D.R.	Pump GPM	Disch. PSI	Motor HP	Receiver Cap. in Gallons		Min. Storage	Inlet Size (Inches)	Discharge Size (Inches)	Inlet Height (Inches)
Total	Storage												
30 VBF (1) or (2)	10 to 30	2.1	1035	4,200	9	20	1/3	30	18	9	2	3/4	17 3/4
50 VBF (1) or (2)	35 to 50	3.5	1725	7,000	15	20	1/3	50	39	11	2	3/4	27 3/4
100 VBF (1) or (2)	60 to 100	6.9	3400	13,800	15	20	1/3	100*	83	11	2	3/4	33 3/4
200 VBF (1) or (2)	125 to 200	13.8	6900	27,800	30	20	1/2	200*	172	12	2	1 1/2	45 3/4
200 VBF (1) or (2)	125 to 200	13.8	6900	27,800	30	30	1	200*	172	12	2	1 1/2	45 3/4

All motors 1 phase, 60 cycle, 115/230 volt, 3500 RPM as standard. 3 phase motors available on special request.  
 \*100 and 200 gallon receivers are supplied with additional flanged opening for field modification to Triplex arrangement.