

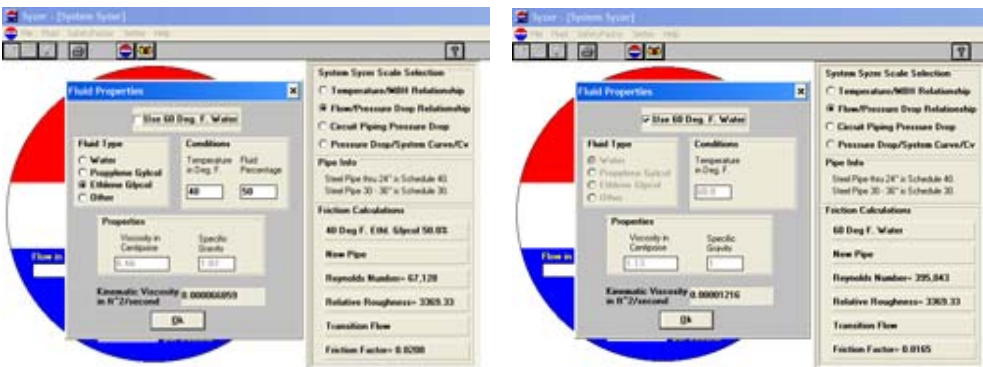
January 11, 2010 ~ Monday Morning Minutes:

## The Bell and Gossett System Syzer® – a few other uses

Last week we used the ITT Bell and Gossett system syzer to select a pipe size for 800 GPM. We used the wheel and the electronic version. Today, let's expand the selection to include a fluid other than water. To use fluids other than water you must use the electronic version. There were two solutions from last week's example using water:



Now let's change the fluid in our example from water to 50% Ethylene Glycol at 40° F. Start by clicking on the "fluid" at the top of the page and remove the 60° F water selection to allow changes. Select ethylene glycol and enter the 40° F and 50% options. Notice the viscosity jumps to 6.65 and the specific gravity is 1.07. We can expect an increase in friction loss with this new fluid.



Select "OK" and we see 6" pipe with a pressure drop of 5.04 feet/100 feet and 8" pipe at 1.33 feet/100 feet. This may make us decide to change from the 6" pipe to the 8" pipe to keep the pump horsepower lower.

Next week we will use this information for other correction factors.

If you would like to download the electronic system syzer go to <http://www.bellgossett.com/BG-SystemSyzer.asp>

**Disclaimer:** R. L. Deppmann and it's affiliates can not be held liable for issues caused by use of the information on this page. While the information comes from many years of experience and can be a valuable tool, it may not take into account special circumstances in your system and we therefore can not take responsibility for actions that result from this information. Please feel free to contact us if you do have any questions.




**REASON #2**

**WHY YOU SPECIFY...**

ITT Bell and Gossett VSX Double Suction Pumps!

Speaking of impellers, the B&G VSX impeller is factory balanced to ANSI G6.3 grade with even tighter tolerances available if required.



**CALL FOR A QUOTE TODAY!**  
**(800) 589-6120**

