

# LAARS<sup>®</sup> NEOTHERM<sup>®</sup>

Residential Modulating,  
Condensing Boilers



**95%+ AFUE**



**LAARS<sup>®</sup>**   
**Heating Systems Company**  
A subsidiary of **BRADFORD WHITE<sup>®</sup>** Corporation



# NEOTHERM®

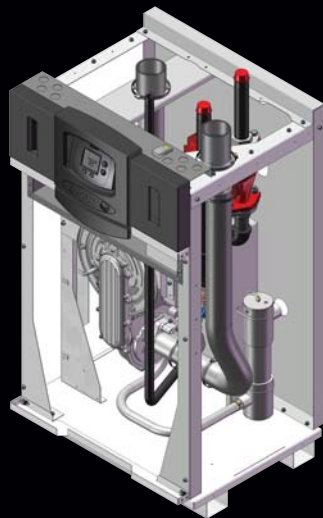
## A NEW GENERATION OF WARMTH

The NeoTherm residential condensing boiler is the latest technological advancement in home heating from Laars Heating Systems. Respected the world over, Laars represents 60 plus years of design and engineering innovation for residential, commercial and industrial space and water heating applications.

You can be sure that no company stands behind its products as well as Laars or offers the extensive support staff, the field technicians and network of service personnel that you'll find with Laars Heating Systems. From giant boilers for hotels, stadiums, schools and casinos to the reliable heating system in your home, Laars is the name to trust.



***High in efficiency and low in emissions, the new NeoTherm® condensing boiler from Laars Heating Systems is a fully packaged, space-saving hydronic solution.***



NeoTherm is a direct vent, sealed combustion, condensing boiler boasting 95% efficiency that modulates with a 5 to 1 turndown. Zero clearance to combustibles and the convenient top connections (horizontal or vertical direct vent) make NeoTherm perfect for tight installations. Featuring an ASME stainless steel heat exchanger, integrated boiler pump and low NOx emissions, NeoTherm is easy to use, and easy on the environment. Built standard with the new LAARS Integrated Control System<sup>SM</sup>, the ignition control, temperature control and high limit are contained in one safe user-friendly device.

***NeoTherm is everything a modern boiler should be... easy-to-use, easy on the environment, powerful and compact. It's the perfect choice for today's demanding homeowner.***

**LAARS®**

**Heating Systems Company**

A subsidiary of BRADFORD WHITE<sup>®</sup> Corporation

# TEN GREAT REASONS

## TO CHOOSE NEOTHERM FOR YOUR HOME HEATING NEEDS



**1.** Energy Star certified  
NeoTherm brings comfort and savings to the home with 95%+ efficiency.



**2.** The direct vent, sealed combustion NeoTherm can vent up to 100' in PVC pipe - this keeps down installation costs. Combustion air can be ducted directly to the boiler - great in modern energy efficient homes.

**3.** Compact in size, NeoTherm is approved for closet installations. It can fit almost anywhere!

**4.** NeoTherm is less expensive to install because it comes fully packaged, including factory mounted and wired circulator pump.



**5.** NeoTherm modulates down to 20%, so it automatically and seamlessly matches the heating load of your home. NeoTherm saves up to 30% when compared to old cast-iron "on-off" boilers.

**6.** NeoTherm is environmentally friendly and meets the most stringent U.S. state codes for NOx emissions.

**7.** NeoTherm is available in four residential sizes that range from 80,000 BTU/hr to 210,000 BTU/hr.

**8.** NeoTherm's condensing design makes it perfect for both radiant floor heating and baseboard systems.



**9.** NeoTherm is competitively priced and provides ultra-high efficiency, making it the best choice in residential heating.

**10.** NeoTherm is backed by a 12-year limited warranty, the best in the business. Just what you'd expect from a company committed to customer satisfaction.



### FEATURES:

- Natural or propane gas
- Four Residential sizes (80,000 to 210,000 BTU)
- Water, air, vent and gas connections on top of boiler
- ASME Stainless steel heat exchanger
- Rated for alcove and closet installations
- Large user interface and display
- Perfect for radiant and baseboard heating
- Qualifies for many local utility rebates
- 12 year limited warranty



# LAARS® NEOTHERM® RESIDENTIAL HYDRONIC BOILER

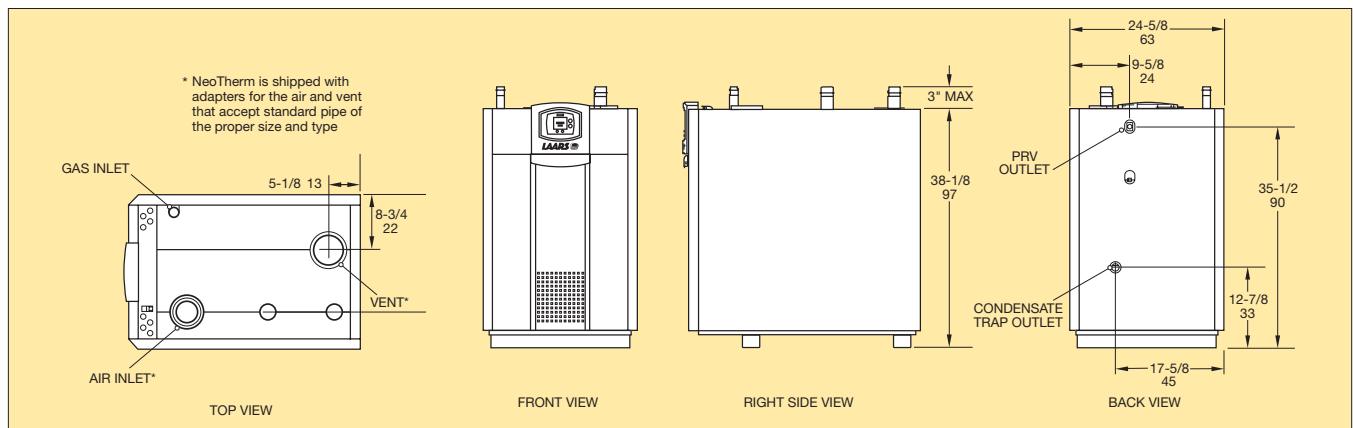


## NeoTherm Features:

- Floor-standing condensing boiler
- All connections are on top of unit
- Stainless steel heat exchanger
- Rated for alcove and closet installations
- Easy to service
- Will qualify for Energy Rebates
- 95%+ AFUE
- LAARS Integrated Control System<sup>SM</sup>
- Works with BAS

## Standard Equipment:

- High condensing efficiency
- Modulation down to 20% of full fire (5:1 turndown)
- Sealed combustion chamber
- Pre-mix metal fiber stainless steel burner
- Low NOx system meets SCAQMD 2012 requirements the most stringent regulations for air quality
- Horizontal or vertical direct vent
- Horizontal vent and air terminals
- Vent and air pipe lengths of up to 100 equivalent feet (each)
- Built-in condensate trap
- Vent temperature cutoff feature
- Spark ignition system
- Stainless steel heat exchanger with welded construction (no gaskets)
- ASME "H" stamp
- Boiler circulator, mounted and wired inside jacket
- 30 psi (207 kPa) ASME rated pressure relief valve
- Temperature & pressure gauge
- Drain valve
- Controls multiple pumps for boiler, system and indirect domestic water heater, each with time delay
- Indirect water heater priority with sensor
- Electronic PID modulating control
- Large user-interface and display
- Alarm output
- Accepts external signal modulation control
- Outdoor reset with sensor
- On/off toggle switch
- Manual reset high limit
- Burner site glass
- Zero clearance to combustible surfaces
- 12 year limited warranty



Size	Width	Height	Depth	Width	Height	Depth	Connections		Max Vent Length CVPC	
	in	in	in	cm	cm	cm	Water	Gas	2" Dia.	3" Dia.
80	24 <sup>5</sup> / <sub>8</sub>	38 <sup>1</sup> / <sub>4</sub>	19 <sup>3</sup> / <sub>8</sub>	63	97	49	1"	1/2"	40 ft.	100 ft.
105	24 <sup>5</sup> / <sub>8</sub>	38 <sup>1</sup> / <sub>4</sub>	19 <sup>3</sup> / <sub>8</sub>	63	97	49	1"	1/2"	40 ft.	100 ft.
150	24 <sup>5</sup> / <sub>8</sub>	38 <sup>1</sup> / <sub>4</sub>	19 <sup>3</sup> / <sub>8</sub>	63	97	49	1"	1/2"	n/a	100 ft.
210	24 <sup>5</sup> / <sub>8</sub>	38 <sup>1</sup> / <sub>4</sub>	26 <sup>5</sup> / <sub>8</sub>	63	97	68	1"	1/2"	n/a	100 ft.



800.900.9276 • FAX 800.559.1583 (Customer Service, Service Advisors)  
 20 Industrial Way, Rochester, NH 03867 • 603.335.6300 • FAX 603.335.3355 (Applications Engineering)  
 1869 Sismet Road, Mississauga, Ontario, Canada L4W 1W8 • 905.238.0100 • FAX 905.366.0130  
[www.Laars.com](http://www.Laars.com) Litho in U.S.A. © Laars Heating Systems Co. 0902 Doc. 1220A